

The Graticule Weekly

UGA Geography Newsletter



Photo by Jacob Shalack, Sapelo Field Research
Coordinator / Marine Institute Manager

IN THE FIELD

New covariance flux tower in place on Sapelo Island

The Georgia Coastal Ecosystems (GCE) Sapelo Island Eddy Covariance Flux Tower was taken down last month to repair and replace corroded tower infrastructure components and remove some instruments for recalibration. The new tower is now in place, and reporting of standard meteorological data has resumed, barring unforeseen problems. Geography graduate students Peter Hawman, Tyler Lynn, and Asa Julien participated in this activity.

Attention Students:



If you are working on research in any building on campus, please remember to stay vigilant of your surroundings by keeping rooms locked when not in use. If you experience any theft on campus, please contact UGA Police at 706-542-2200.



Vaccines are available at the University Health Center (UHC) [by appointment!](#) You can also get tested for COVID-19 at the UHC [by scheduling an appointment here.](#) Stay safe!



Looking to be CERTified? The Office of Emergency Preparedness has classes available until March 23 for those who want to serve on the Community Emergency Response Team (CERT), which is a federal initiative that helps to prepare people for emergency situations. Interested in registering for a class? [Sign up here!](#)



Undergraduate advising appointments are now available in SAGE. Get ahead of the curve before course registration starts in April!

RESEARCH

Forest Transformation in the Wake of Colonization: The Quijos Andean Amazonian Flank, Past and Present

Research on landscape transformation of the Andean Amazonian flank of Quijos in the wake of colonization in Ecuador has been published in the journal *Forests* 13(1). Dr. Fausto Sarmiento led the work with coauthors from archaeology at Catholic University of Ecuador and tourism at Cumanda Ethnobotanical Garden. This contribution was invited for inclusion in the special issue on "Past Environmental Changes and Forest Transformation".

>> To read the full article, follow the link [here!](#)



The San Rafael waterfall at the terminus of the Quijos river.
(a) The left image is the historical flow and scenic beauty of the tallest waterfall in Ecuador. (b) The right image shows the change in the current flow that responded to natural causes of erosion; however, there are hints reflecting intensive manipulation of the riverine areas for the Coca-Codo Sinclair hydroelectric megaproject nearby.

UNDERGRADUATE STUDENTS

News & Reminders

- [2022 Into the Fields Summer Internship](#)

Student Action with Farmworkers (SAF) places college students with organizations that serve, organize, or advocate for farmworker justice.

Deadline to Apply: February 7

- [IMPACT UGA: Spring Break service-learning opportunity](#)

If you're looking for spring break plans, check out IMPACT Service Breaks at UGA! They host fun, affordable service-learning trips, and currently they have spots open on their Environmental Justice trip to Ft. Myers, Florida. This trip can be used to fulfill your experiential learning requirement, and the \$155 cost covers transportation, housing, and food for the entire week. (Fee waivers are available!)

Deadline to Apply: February 9

- [Undergraduate Honors Awards](#)

The Geography awards season! is upon us! If you would like to be considered for an award (or multiple awards), please nominate yourself [here!](#)

Deadline to Apply: February 9

- [2022 CURO Symposium - Submissions due](#)

The 2022 CURO Symposium will be held April 4-5, 2022, at the Classic Center.

Eligibility to submit an abstract can be found at the link above!

Deadline to submit an abstract: February 11 at noon

For more information on potential internship sites, please see [this PDF](#).

Departmental Events

[Severe Weather Workshop](#) Mon., Feb. 7
3:30-4:30pm
AND
5:30-6:30pm
MLC, rm. 348
and via Zoom

Chi Epsilon Pi and the UGA Office of Emergency Preparedness (OEP) are partnering to host a severe weather workshop. In the workshop, you will discuss severe weather, severe weather preparedness, and what you need to do in multiple different kinds of severe weather emergencies to keep yourself, your friends, and your family safe. There will be a Kahoot trivia quiz at the end of the presentation for a chance to win a \$15 gift card!

Campus-wide and Other Events

College of Environment + Design - Career Fair Tues., Feb. 15
10am-1pm
Tate Grand Hall, 5th Floor

This open networking event is designed for students to connect with possible employers within Landscape Architecture and Urban Planning fields. Attendees will learn about available internship opportunities and full-time positions.

Tree Rings and Heritage Science - Dept. of Anthropology Presentation Mon., Feb. 7
2pm
Baldwin Hall, rm. 264, and [via Zoom](#)

Hear from University of Kentucky's Dr. Katharine Napora on her presentation titled "Tree Rings & Heritage Sciences: Advancing Paleoclimate Reconstructions & Enhancing the Impact of Archaeology in the 21st Century."

Follow us on social media!



GRADUATE STUDENTS

News & Reminders

- [Request for Departmental TA Funding \(Fall '22 and/or Spring '23\)](#)

The Graduate Coordinator's Office would like to gauge the number of students who expect or would like funding for the next academic year. Please fill out [this form](#).

Deadline to submit: February 11

- [Summer Research Grants](#)

More information about the research grants and materials needed to apply can be found [here](#). All materials must be sent to Dr. Andrew Grundstein and Sarah Baker.

Deadline to submit: February 14

- [Three Minute Thesis \(3MT\)](#)

The Three Minute Thesis (3MT™) is a research communication competition, where master's and doctoral students have three minutes to present a compelling oration on their thesis or dissertation topic and its significance.

Deadline to [Register](#): February 14

Running list of assistant professorship opportunities and internships [here!](#)

Events

Demystifying the IRB (Institutional Review Board) Tues., Feb. 8
5:30-6:30pm
via Zoom
*Please register [here!](#)

Presented by Dr. Jennifer McDowell, Behavioral and Brain Sciences program

FACULTY AND INSTRUCTORS

News & Reminders

- Faculty Hire Month - Sign Up for "Meet Faculty" dates (**due Mon., Feb. 7 at noon**)

Please remember to sign up to meet candidates for the GeoAI faculty position. The sign up sheet can be found in the email sent from Kajal Patel on Thursday, Feb. 3 (Subject: GeoAI Faculty Hire - Campus Visit Sign-up Sheet)

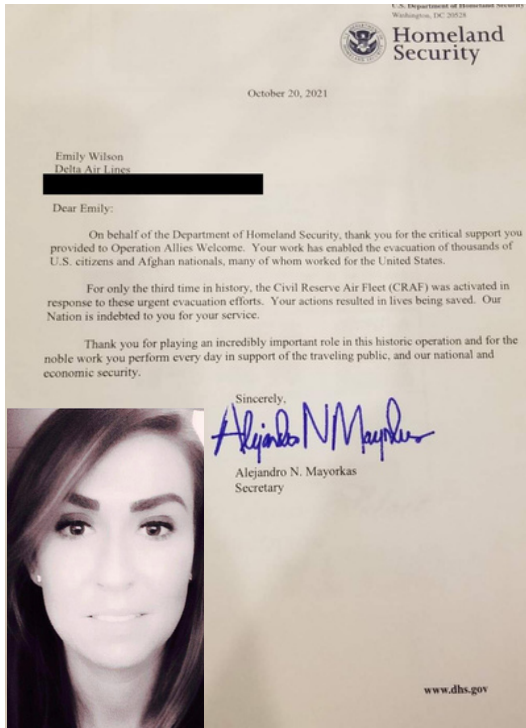
- [Engage & Learn Grant Program](#)

The Engage & Learn Grant Program will award a minimum of 10 internal grants this year for staff professional development. Applications are open through February 28.

More information on the grants and how to apply [here](#).

The Graticule Weekly

UGA Geography Newsletter



ALUMNI NEWS

Atmospheric Sciences alum recognized for contributions to Operation Allies Welcome

Atmospheric Sciences alumna and Senior Meteorologist for Delta Air Lines, Emily Wilson, was recently recognized by the Department of Homeland Security for the "critical support [she] provided to Operation Allies Welcome", an initiative set forth by the DHS to evacuate U.S. citizens and Afghan nationals during the insurrection in Afghanistan. On August 29, 2021, the President of the United States directed the DHS to lead and coordinate ongoing efforts across the federal government to support

vulnerable Afghans, including those who worked alongside American troops in Afghanistan for the past two decades, as they safely resettle in the United States. Congratulations to Emily for her work, and we look forward to hearing more of her successes to come!

>> Wilson's received letter can be found [here](#).

RESEARCH

Meteorological influences on anthropogenic PM_{2.5} in future climates: Species level analysis in the community earth system model v2

A recent paper led by M.S. Geography graduate student, Alison Banks, has been published by "Earth's Future"! Banks co-wrote the paper with major advisor and UGA Professor, Dr. Gabriel Koopman, and Assistant Professor at Texas A&M University, Dr. Yangyang Xu. Their work demonstrates how humans are modifying the climate so much that the greenhouse gas emissions we produce are changing rainfall patterns. The researchers simulated a planet where aerosol pollution continues at present-day rates for 100 years and found that the modified climate had an effect on worsening air quality in places.

>> The full paper can be found [here](#).

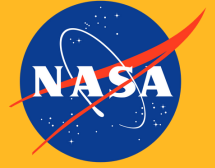
UNDERGRADUATE STUDENTS

News & Reminders

- [Southern Appalachians Weather and Climate Workshop](#)

The National Weather Service and the region's meteorology/atmospheric sciences programs are hosting its first-ever Southern Appalachians Weather and Climate

Attention Students - Important deadlines



NASA DEVELOP is a 10-week paid research opportunity, open to current students and recent college graduates as well as transitioning/early career professionals. Projects focus on helping local, national, and international communities address their environmental concerns while utilizing NASA's Earth-observing fleet of satellites. This is a great opportunity for participants who are interested in practical applications of remote sensing and GIS, specifically in the field of Earth Science. More information on the program and how to apply can be found [here](#).

Deadline to apply: February 25



Want to move the needle on climate change in Georgia? The [Georgia Climate Project](#) is looking for a committed and enthusiastic student intern to join the team for Summer 2022! The Georgia Climate Project (GCP) is a state-wide consortium of ten academic partner institutions founded by Emory, Georgia Tech, and University of Georgia. Their goal is to improve understanding of climate impacts and solutions in Georgia and lay the groundwork for the state to take effective climate action. More information on how to apply can be found [here](#).

Deadline to apply: February 25

Workshop in Asheville, NC on the UNC-Asheville campus on March 25-26. Registration is now open for this meeting--it's just \$30 for students, \$65 for others!

Deadline to Register: March 1

- [GIS Tech positions - Pike Engineering](#)

Pike Engineering is looking for recent graduates to join their team as GIS technicians! If you have ArcMap or ESRI skills you want to put to work in the Utility industry, submit your resume to Laura Bailey at lbailey@pike.com.

Deadline to Apply: March 15

Events

Ask Me About Wed., Feb. 16
Peace Corps!: 5-6pm
A webinar event via Zoom

*Register [here!](#)

Want to learn more about how you can serve your community? Ask a returning [Peace Corps](#) volunteer!

For more information on potential internship sites, please see [this PDF](#).

General News + Reminders



Looking to be CERTified? The Office of Emergency Preparedness has classes available until March 23 for those who want to serve on the Community Emergency Response Team (CERT), which is a federal initiative that helps to prepare people for emergency situations. Interested in registering for a class? [Sign up here!](#)

Campus-wide and Other Events

ICON Ph.D. Fri., Feb. 18
Program - [Dr. Roger Merino](#) 12pm
[Guest Lecture](#) via Zoom
*Register [here!](#)

Join the Integrative Conservation Ph.D. program as they host a guest lecture event, led by Dr. Roger Merino from Universidad del Pacífico (Peru). The lecture, titled "Conflicting sovereignties: Global conservation, protected areas and Indigenous nations in the Peruvian Amazon", is co-sponsored by the Willson Center for Humanities and Arts, Department of Anthropology, School of Law, Department of Sociology, Latin American and Caribbean Studies Institute, Institute of Native American Studies, and the Center for Integrative Conservation Research. To learn more about Dr. Merino and his work, please follow the flyer attached [here!](#)

Follow us on social media!



GRADUATE STUDENTS

News & Reminders

- [Summer Research Grants](#)

More information about the research grants and materials needed to apply can be found [here](#). All materials must be sent to Dr. Andrew Grundstein and Sarah Baker.

Deadline to submit: February 14

- [Three Minute Thesis \(3MT\)](#)

The Three Minute Thesis (3MT™) is a research communication competition, where master's and doctoral students have three minutes to present a compelling oration on their thesis or dissertation topic and its significance. Students can register [here!](#)

Deadline to Register: February 14

- [xPD Campus Internship Program for Summer 2022](#)

This internship program is funded by the Graduate School and coordinated by the Office of Experiential Professional Development (xPD). Selected PhD students in the arts, humanities, and social sciences will receive paid summer assistantships in various administrative units on the UGA campus.

Deadline to Apply: February 15

Running list of assistant professorship opportunities and internships [here!](#)

FACULTY AND INSTRUCTORS

News & Reminders

- [TA Delegation and Instructions for Reimbursements](#)

Geography has its own team in Franklin Works that can create expense reports and Travel Authorities on behalf of the faculty. The team who handles this is fcb5c5@uga.edu and our delegates are Michelle Brawner (Sanders) and Rosalina Mirandilla. A few notes: 1) This process is optional-faculty are still able to create these reports themselves. 2) All receipts must be in PDF format. 3) The BSC team cannot submit expense reports on your behalf; once they create the report, they email you and ask you to log in to OneSource to confirm and submit the report.

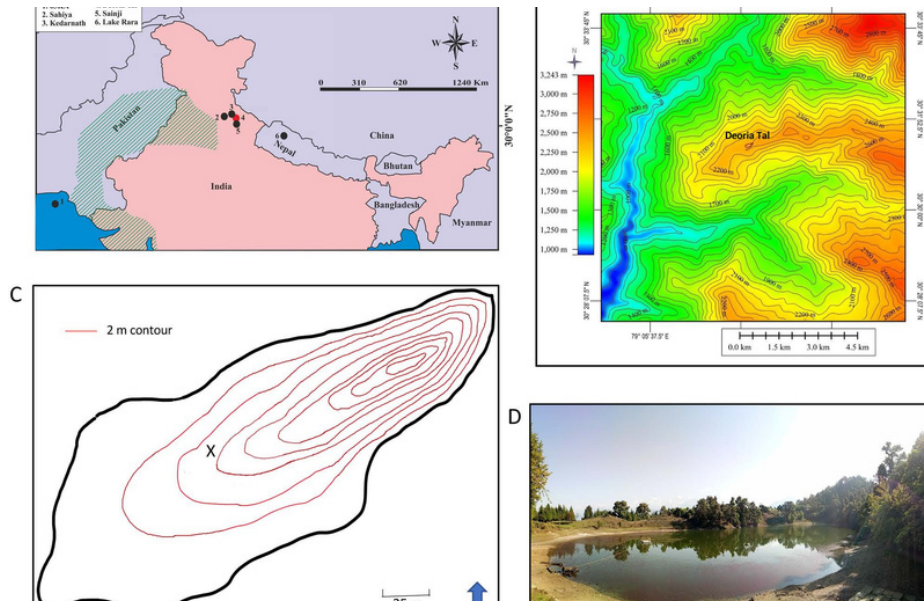
- [Engage & Learn Grant Program](#)

The Engage & Learn Grant Program will award a minimum of 10 internal grants this year for staff professional development. Applications are open through February 28.

More information on the grants and how to apply [here](#).

The Graticule Weekly

UGA Geography Newsletter



RESEARCH

Hydroclimate change in the Garhwal Himalaya, India at 4200 yr BP coincident with the contraction of the Indus civilization

A recent paper led by M.S. Geography alum, **Emily Niederman**, was published by *Scientific Reports* late November of 2021. Niederman co-wrote the paper with former major advisor and UGA Professor, **Dr. David Porinchu**, and Quaternary Research Scientist and Professor at Kumaun University, **Dr. Bahadur Kotlia**. Their efforts shed light on the temporal relationship between late Holocene climate change and the demise of the Indus civilization.

>> Their full paper can be found [here](#).

IN THE COMMUNITY

Queer Ecojustice Project

Ph.D. students, **Vanessa Raditz** and **Jessica Martinez**, are forming an Athens "node" of the Queer Ecojustice Project! Through the pandemic, Raditz and Martinez have been dreaming of ways to safely connect with others who imagine collective liberation for all beings. This Spring, they'd like to organize 2-3 meet-ups for gardening, hiking and/or camping, and planning an outdoor screening of [Fire & Flood: Queer Resilience in the era of Climate Change](#) for Earth Day.

Learn more about the project and how to get involved [here](#), or email queerecoproject@gmail.com!

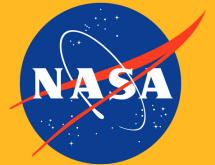
UNDERGRADUATE STUDENTS

News & Reminders

- [Southern Appalachians Weather and Climate Workshop](#)

The National Weather Service and the region's meteorology/atmospheric sciences

Attention Students - Important deadlines



NASA DEVELOP is a 10-week paid research opportunity, open to current students and recent college graduates as well as transitioning/early career professionals. Projects focus on helping local, national, and international communities address their environmental concerns while utilizing NASA's Earth-observing fleet of satellites.

[Apply now!](#)

Deadline to apply: February 25



Want to move the needle on climate change in Georgia? The [Georgia Climate Project](#) is looking for a committed and enthusiastic student intern to join the team for Summer 2022!

The Georgia Climate Project (GCP) is a state-wide consortium of ten academic partner institutions. Their goal is to improve understanding of climate impacts and solutions in Georgia and lay the groundwork for the state to take effective climate action.

More information on how to apply can be found [here](#).

Deadline to apply: February 25

Awards and Recognitions



programs are hosting its first-ever Southern Appalachians Weather and Climate Workshop in Asheville, NC on the UNC-Asheville campus on March 25-26. Registration is now open for this meeting--it's just \$30 for students, \$65 for others!

Deadline to Register: March 1

- [GIS Tech positions - Pike Engineering](#)

Pike Engineering is looking for recent graduates to join their team as GIS technicians! If you have ArcMap or ESRI skills you want to put to work in the Utility industry, submit your resume to Laura Bailey at lbailey@pike.com.

Deadline to Apply: March 15

For more information on potential internship sites, please see [this PDF](#).

Congratulations to Rachel Arney, Ph.D. ICON and Geography student, for winning the ICON Agile Scientist Award in recognition of her collaborative work with the Eastern Band of Cherokee Indians in the Spring of 2020. The resulting policy brief outlined the rules and procedures governing tribal access to forest products and tribal sovereignty on the Pisgah and Nantahala National Forests.

GRADUATE STUDENTS

News & Reminders

- Attention students graduating Spring 2022: the final date to submit requests for Transfer of Credit (with accompanying transcripts) to the Graduate School is **February 28**.

- [Graduate Annual Review](#)

The Graduate Coordinator is continuing a slightly modified graduate review process to provide better guidance and feedback to grad students. They would like you to [prepare a CV and a short annual narrative](#). You can upload the items to an ELC course called "Geography Graduate Student CVs and Accomplishments" under "assignments".
Deadline to Upload: February 28

- [Communication of Research and Scholarship Grant](#)

The Graduate School is pleased to offer this grant to support graduate students who wish to communicate the results of their scholarship to non-academic audiences. If you'd like to [submit an application](#), please contact Dr. Andy Grundstein or Sarah Baker to discuss the process.

Please follow this deadline: March 7

Running list of assistant professorship opportunities and internships [here](#)!

Events

Graduate Careers Week Feb. 21-Mar 2

Hosted by the Office of Experiential Professional Development (xPD), this career conference is full of events for graduate students to learn more about how they can market themselves to potential employers and prepare themselves for a competitive job market. Students can find the full list of programs to attend [here](#)!

Graduate Peer Support Network: Normalizing Failure and Redefining Success Thurs., Feb. 24
In-person: 1pm
Virtual: 6pm
**Register [here](#)!*

- Grad School Travel Funding

The Graduate School quarterly deadline for requesting travel funding is approaching. If you plan to travel out of state during the second quarter of this year (April 1-June 30, 2022), the deadline to request is **March 7th**. Requirements from the Graduate School can be found [here](#).
[Here are the forms you need to make requests.](#)

Campus-wide and Other Events

[Dr. Nicholas Kessler](#) Mon., Feb. 21
2pm
[Research Talk](#) - Baldwin Hall, rm. 264,
Department of Anthropology and [via Zoom](#)

[2022 Owens Lecture](#) Tues., Feb. 22
10am-12pm
MLC, rm. 303

This year's lecturer is Dr. Fred Oswald, Professor and Herbert S. Autrey Chair in Social Sciences at Rice University. They will be giving their talk on "The Practice, Culture, and Future of Open Science in the Social Sciences." This is an open event to the entire UGA community!

22nd Annual Mary Frances Early Lecture Tues., Feb. 22
3-4pm
Georgia Center, Mahler Hall and [livestream](#)

This year's speaker is Dr. Robert Jones, Chancellor of the University of Illinois Urbana Champagne. He is the first African American scholar appointed as chancellor of the University of Illinois, the state's flagship, land-grant university. Chancellor Jones is a Georgia native who has worked to make education available to young scholars around the world.

Follow us on social media!



FACULTY AND INSTRUCTORS

News & Reminders

- [Engage & Learn Grant Program](#)

The Engage & Learn Grant Program will award a minimum of 10 internal grants this year for staff professional development. Applications are open through **February 28**.

More information on the grants and how to apply [here](#).

The Graticule Weekly

UGA Geography Newsletter



DEBRIEF: LINNENTOWN WALK

"Giving Voice to Linnentown"

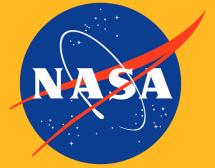
Last week, students in Dr. Jerry Shannon's Community GIS class were led through what used to be Linnentown, a Black Athens neighborhood that was removed during urban renewal in the 1960's to make space for UGA's high rise dorms - Brumby, Creswell, and Russell Halls. The walk was led by **Hattie Thomas Whitehead**, a fourth generation resident who grew up in Linnentown and witnessed firsthand its demolition. The walk started at the corner of Cloverhurst Avenue and Finley Street next to the West Campus parking deck, at what used to be "Lyndon Road" in Linnentown.

In 1962, the University of Georgia and the City of Athens used eminent domain laws, without providing any formal notices to residents, to tear down the Linnentown neighborhood and displace families, like Whitehead's, as part of their urban renewal project. (Eminent domain laws allow a government to seize private property as long as it provides monetary compensation to the owner.) While it is disclosed on paper that families received compensation (though not equitable to that of white homeowners in other surrounding neighborhoods during the time) for the removal of their homes, most families were pressured by the city and the university to move out earlier lest they be charged rent (which was garnished from their compensation).

Almost 60 years later, Whitehead is one of several outspoken Linnentown residents seeking "recognition and redress." For decades, knowledge of Linnentown was essentially limited to the former residents. Residents issued several reparational demands, including financial compensation and a wall of recognition. Last year, Athens Mayor Kelly Girtz signed a proclamation officially apologizing for Athens-Clarke County's role in the destruction of Linnentown. The Mayor and Commission unanimously approved a resolution in support of recognition and redress for Linnentown, its descendants, and Athens-Clarke County Black communities harmed by urban renewal. UGA, however, has yet to formally acknowledge the wrongdoings of the urban renewal project.

For more information about the Linnentown Project and its mission, follow the link [here!](#)

Attention Students - Important deadlines



NASA DEVELOP is a 10-week paid research opportunity, open to current students and recent college graduates as well as transitioning/early career professionals. Projects focus on helping local, national, and international communities address their environmental concerns while utilizing NASA's Earth-observing fleet of satellites.

[Apply now!](#)

Deadline to apply: TODAY



Want to move the needle on climate change in Georgia? The [Georgia Climate Project](#) is looking for a committed and enthusiastic student intern to join the team for Summer 2022!

The Georgia Climate Project (GCP) is a state-wide consortium of ten academic partner institutions. Their goal is to improve understanding of climate impacts and solutions in Georgia and lay the groundwork for the state to take effective climate action.

More information on how to apply can be found [here](#).

Deadline to apply: TODAY



Do you want to engage in meaningful work with communities? Are you interested in a sustainability-related career? The Atlanta Regional Commission is now seeking applications for

UNDERGRADUATE STUDENTS

News & Reminders

- [Southern Appalachians Weather and Climate Workshop](#)

The National Weather Service and the region's meteorology/atmospheric sciences programs are hosting its first-ever Southern Appalachians Weather and Climate Workshop in Asheville, NC on March 25-26. Registration is now open for this meeting--it's just \$30 for students, \$65 for others!

Deadline to Register: March 1

For more information on potential internship sites, please see [this PDF](#).

GRADUATE STUDENTS

News & Reminders

- Attention doctoral students graduating Spring 2022: The final date to [submit information](#) for the Commencement Program is **March 11**.

- [Communication of Research and Scholarship Grant](#)

The Graduate School is pleased to offer this grant to support graduate students who wish to communicate the results of their scholarship to non-academic audiences. If you'd like to [submit an application](#), please contact Dr. Andy Grundstein or Sarah Baker to discuss the process.

Please follow this deadline: March 7

- Grad School Travel Funding

The Graduate School quarterly deadline for requesting travel funding is approaching. If you plan to travel out of state during the second quarter of this year (April 1-June 30, 2022), the deadline to request is **March 7th**.

Requirements from the Graduate School can be found [here](#).

[Here are the forms you need to make requests.](#)

Running list of assistant professorship opportunities and internships [here](#)!

Events

Graduate Careers Week Feb. 21-Mar 2

This career conference is full of events for graduate students to learn more about how they can market themselves to potential employers and prepare themselves for a competitive job market. Students can find the full list of programs to attend [here](#)!

Publishing in Academic Journals Workshop Tues., Mar. 1
5:30-6:30pm
via Zoom
*Register [here](#)!

Presented by Dr. Michelle vanDellen, Behavioral and Brain Sciences Program

- [The Gender, the Body, and Fieldwork Across Disciplines Symposium](#)

The GBF planning committee is seeking graduate student session organizers and volunteers for a virtual interdisciplinary symposium (to be held in April) for graduate students.

This symposium is a platform for students to open dialogue on questions and experiences of gendered bodies and sexuality in undertaking fieldwork.

Deadline to [Submit Proposals](#): March 18

their Sustainable Connections Internship Program. Upper-level undergraduates, graduate students, and Ph.D. candidates are encouraged to apply! More information on timeline, responsibilities, eligibility, and how to apply can be found [here](#)!

Deadline to apply: April 8

Departmental Events

Lunch & Learn: Thurs., Mar. 17
Maintaining 12pm
Mental Health and Wellness via Zoom

More information about this Lunch & Learn can be found below. This event is available to all faculty, staff, and students in the department!

Campus-wide and Other Events

Graduate and Postdoc Visas: Tues., Mar. 1
1pm
Immigration via Zoom
Options in STEM *Register [here](#)!
Fields

Join the Office of Research for this session that will discuss recent policy and regulatory changes related to visa and immigration options for graduate students, postdoctoral researchers and others working in STEM fields. Topics will include (but are not limited to): the recent State Department STEM Initiative, clarification on the filing of immigrant petitions by internationals in STEM fields, and expansion of the designated STEM degree list.

FACULTY AND INSTRUCTORS

News & Reminders

- NASA SCoPE Seed Grant Opportunity

NASA SCoPE is pleased to announce a funding opportunity through NASA's Science Activation 2.0 Education and Community Outreach Program (SciAct). They are offering

Follow us on social media!



Building Technical Literacy in the Department of Geography

UPCOMING:

LUNCH & LEARN

Maintaining Mental Health and Wellness

When: Thursday, March 17
12:00-12:30pm

For who: Faculty, Staff, and Students

Where: via Zoom

Led by: Kelly Truesdell (Fontaine Center) and
Jennifer Hester (CAPS)

[*Register here
for the Zoom
link!*](#)

*Please register
by **Tues., Mar. 15**

RESOURCES

Google Drive vs OneDrive:

Which cloud storage is best for which purpose?

The University of Georgia has subscriptions to both Microsoft Office Suites and Google Workspace, but what's the difference between the two, and what are the perks of each? Find out more on the [Franklin College Knowledge Base!](#)

TRAINING AND DEVELOPMENT PROGRAMS

[MS Excel - Tips, Tricks and Techniques](#) (available in PEP)

There are trainings in Excel available in the Professional Education Portal! After you login to PEP, search "MS Excel" in the "Search for learning" search bar, and see what there is to offer.

***For more trainings**, check the Center for [Continuing Education website](#), [Training & Development website](#) (for current employees), and the [Professional Education Portal!](#)