

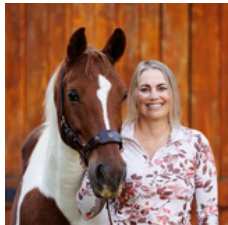
The Graticule Weekly

UGA Geography's Weekly Newsletter



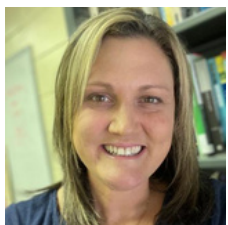
FACULTY SPOTLIGHT

Amy Trauger & Jennifer Rice to Launch New UGA Press Series



Amy Trauger
Professor of Geography

UGA Geography Professors Amy Trauger and Jennifer Rice will launch a new UGA Press series called Feminisms, Gender, Space at this year's American Association of Geographers (AAG) meeting in Detroit. The series will be launched in collaboration with Jennifer Fluri at the University of Colorado, Boulder.



Jennifer Rice
Professor of Geography

This is an international monograph series publishing cutting-edge, critical and engaged social science on the topics of intersectional feminisms, sexuality, and gender as they relate to geographical spaces and places. Sample topics include intersectional feminisms, feminist political ecology, feminist pedagogies, gendered geopolitics, embodiment and exclusion, gendered cities, autoethnography, narrative nonfiction, and more.

The Editorial Board includes: Beth Bee (East Carolina University), Karen Culcasi (West Virginia University), Rebecca Elmhirst (University of Brighton), Sarah Elwood (University of Washington), Anjali Enjeti (Independent Scholar), Caroline Faria (University of Texas), Tish Lopez (University of Washington), Barbara McCaskill (University of Georgia) and Amy Ross (University of Georgia).

[Learn More About Dr. Amy Trauger's Research Here](#)

&

[Learn More About Dr. Jennifer Rice's Research Here](#)

AAG SPRING BOOK LIST NOMINATIONS

The American Association of Geographers is compiling a list of around 50 recent geographic publications to highlight for this spring's official Book List, and the opportunity has been extended for UGA students, faculty and staff to OFFICIALLY nominate their favorite book to be featured! If you or someone you know have read any interesting, though-provoking, exciting, or otherwise cool books in the world of geography recently, please fill out the form below!

[Learn More & Nominate a Book Here!](#)

General News and Announcements



The Graticule Weekly is distributed each Friday Afternoon. If you have any news or events you'd like to share throughout the semester, please share them the Geography Department's Communication Coordinator well in advance.

Past editions of The Graticule Weekly are available to view on our website!



With the Fall semester in full swing, our community remains busy as faculty, staff, students, and visitors navigate our campus. Prioritize your transportation safety and the safety of other's by checking out [the Watch For Dawgs official website.](#)



Please download the new UGA Safe app from the Google Play or Apple App stores. Login using your UGA MyID or register as a guest to take advantage of a variety of safety features. For more information, please visit the [UGA Office of Emergency Preparedness website.](#)

Follow us on social media!



UPCOMING DEFENSES



Nemin Wu
Oral Comp Exam
March 19, 2025
11:30am, Location TBA



Alex Music
Thesis Defense
April 4, 2025
9am, GGY 147



Jielu Zhang
Dissertation Defense
April 4, 2025
12:00pm, GGY 147



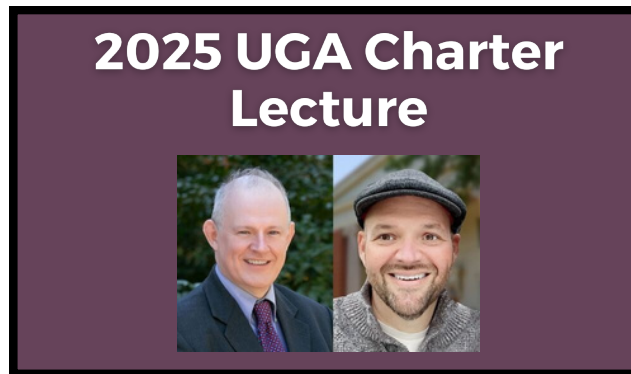
Xin Yan
Comprehensive Exam
April 18, 2025
10:00am, GGY 147

MARK YOUR CALENDAR



March 26
University Chapel
11am to 12pm

Join UGA's 2025 Regent's professors, Andrew Herod, Dept. of Geography and Stephen Trent, Dept. of Infectious Diseases for this year's Charter Lecture. [Learn more here!](#)



April 23
Geography Bldg.
Room 200D

Our 2025 Geography Undergraduate Awards Reception will take place on Wednesday, April 23rd. Award nominations are open now! See the next page for info on nominating.



May 9
Location TBD
11:00 am

Our 2025 Geography Graduation Ceremony will take place on Friday, May 9th at 11am. More information about location, ticketing, & more coming soon.



Prioritize Your Well Being:

Crafty Coping Club

Crafty Coping Club March 19
6:30 - 7:30pm
UHC Health Center

Crafts, chats and learning new skills -
Crafts provided or bring your own -
Crafting also not required, just come chat!

Change Stress Into Success

Change Stress March 19
Into Success 1:00 - 1:50pm
Online

Join us for this four-part rotating series on managing stress & anxiety. You will learn how to identify and manage your own stress and anxiety as it arises.

UMatter

UMatter March 24
5:00pm
MLC 147

Step into our 60-90 minute interactive upstander intervention program, where college students will be given the knowledge and skills to take action when they see someone in need. Change the narrative and become an upstander. All participants will receive a free Fontaine T-Shirt!

OPPORTUNITIES AND ANNOUNCEMENTS

LACSI RESEARCH TALK

“BEFORE THE WALL: SCIENCE AND ENVIRONMENTAL GOVERNANCE ON THE US-MEXICO BORDER”

DR. ANALIESE RICHARD,
PROFESSOR OF HUMANITIES
UNIVERSIDAD AUTÓNOMA
METROPOLITANA-CUAJIMALPA
(MEXICO CITY)



**WEDNESDAY APRIL 2, 2025
3:30 TO 4:30 PM**

BALDWIN HALL 480 (PINNACLE
ROOM)



LACSI.UGA.EDU/EVENTS

Co-Sponsored By:



Latin American and
Caribbean Studies Institute
Franklin College of Arts and Sciences
UNIVERSITY OF GEORGIA

Office of Research
Willson Center for
Humanities & Arts

GET YOUR FLU SHOT ON CAMPUS!

#FLUGA

NO OUT-OF-POCKET COST FOR STUDENTS!

#BeWellUGA

SCAN TO FIND DATES & LOCATIONS



University Health Center
College of Pharmacy
Well-Being Resources

Bring your UGA ID
& Insurance Card!

Social Media

Want to stay up to date with all things UGA Geography? Follow us on our social media accounts. If you have any events, news, awards, or other information you'd like to share on our social media, please reach out to Matt Calonius.



<https://www.facebook.com/GeographyDepartmentUGA/>



<https://www.instagram.com/geographyuga/>



https://twitter.com/UGA_Geography



<https://geography.uga.edu>

OPPORTUNITIES AND ANNOUNCEMENTS

• [Now Hiring: GIS Specialist Position at The Ray](#)

The Ray is looking for a highly motivated and ambitious GIS Specialist that reports directly to the GIS Manager. This individual needs to be comfortable operating and collaborating with a team of GIS professionals who perform mapping, analysis and modeling for transportation and energy infrastructure for partners in the public and private sector. These abilities will be used to help further the organization's mission to advance and innovate the transportation sector.

Title: GIS Specialist

- Reports To: GIS Manager
- Position Type: Salaried, full-time position
- Location: This position is hybrid and reports to The Ray office located in Atlanta, GA
- Schedule: Monday - Friday

Support the development and management of GIS maps and applications

- Perform geospatial data development and analysis
- Efficiently manage geospatial databases and aerial photography
- Interpret and analyze remote sensing data
- Accurately maintain geospatial database information by interpreting data from a variety of sources and creating, verifying, and updating information in the geospatial database through the use of GIS software and technologies
- Acquire, process, integrate, visualize, and analyze geospatial data provided by The Ray's partners into existing GIS datasets, and GIS products
- Present results and findings to The Ray staff and/or The Ray's partners.
- Attend meetings as requested by The Ray staff.

Skills:

- Undergraduate degree in a related field
- Proficient in ArcGIS Pro and ArcGIS Online
- Problem-solving, critical thinking, and analytical thinking skills
- Strong written and oral communication skills
- Individual and team-based GIS project experiences

Applicants must be authorized to work for ANY employer in the U.S. We are unable to sponsor or take over sponsorship of an employment Visa at this time. Please send your resume and cover letter to Anthony Saylor at anthony@theray.org by March 19th, 2025.

• [Graduate School Dates to Remember](#)

Mar. 24, 2025

Final date for electronically submitting one complete copy of a thesis or dissertation for a format check for Spring 2025 graduation. (Note: this is the "first format check" deadline.)

- [Format check](#) – Please be aware that this link will send you to ProQuest. All ETD submissions are handled through ProQuest.

Also remember to keep an eye on the Spring UGA [Academic Calendars](#) | [Office of the Registrar](#)

Prioritize Your Well Being:

Crafty Coping Club

Crafty Coping Club March 19
6:30 - 7:30pm
UHC Health Center

Crafts, chats and learning new skills -
Crafts provided or bring your own -
Crafting also not required, just come chat!

Change Stress Into Success

Change Stress March 19
Into Success 1:00 - 1:50pm
Online

Join us for this four-part rotating series on managing stress & anxiety. You will learn how to identify and manage your own stress and anxiety as it arises.

UMatter

UMatter March 24
6:00pm
MLC 147

Step into our 60-90 minute interactive upstander intervention program, where college students will be given the knowledge and skills to take action when they see someone in need. Change the narrative and become an upstander. All participants will receive a free Fontaine T-Shirt!

OPPORTUNITIES & ANNOUNCEMENTS

- [Human Geography Postdoc at Dartmouth](#)

The [Department of Geography](#) at Dartmouth College invites applications for a postdoctoral fellow in Human Geography. This two-year position will augment and complement existing departmental strengths, which include critical urban and health studies, Black geographies, feminist geographies, and nature-society relations.

This position is full-time, non-remote, in-residence at Dartmouth in Hanover, NH, with a start date as early as July 1, 2025. Advised and hosted in the Department of Geography, the postdoctoral researcher is expected to contribute intellectually to the department and Dartmouth, and to teach two 10-week long courses over two years. Postdoctoral fellows are also supported by the [Guarini School for Graduate and Advanced Studies](#), including their [diversity and inclusion initiatives](#).

[Dartmouth](#) is committed to academic excellence and encourages the open exchange of ideas within a culture of mutual respect. People with different backgrounds, life experiences, and perspectives make the Dartmouth community diverse, which enhances academic excellence. Applicants should address in their cover letter how their research, teaching, service, and/or life experiences prepare them to advance Dartmouth's commitment to diversity in service of academic excellence.

Qualifications

PhD, or ABD with degree received by the start date, in Geography or a closely related field.

Application Instructions

Please submit all materials electronically through Interfolio:

1. Letter of application of up to four (4) pages that includes research and teaching interests as well as preparation to advance Dartmouth's commitment to diversity in service of academic excellence;
2. Curriculum vitae, including names and contact information for three references;
3. One representative writing sample.

Review of applications will begin on March 3, 2025 and continue until the position is filled. Inquiries should be directed to Department Chair Xun Shi at geography@dartmouth.edu.

- [Important Notes For Graduate Students - From Fabiana Hayden](#)

1) If you are getting ready to reach important milestones in your program and would like to chat about your progress, schedule a short meeting with me here: [Bookings with me - Fabiana Hayden - Outlook](#). I will be happy to schedule a virtual meeting in Zoom if you're not available on Campus.

- The Geography Graduate Handbook is also a great resource to guide you through your progress:

- [MA/MS Handbook](#)
- [PhD Handbook](#)

2) Remember to register for Summer term soon: [Graduate Students | UGA Summer](#)

3) Please fill out and get your advisor's approval in the [Advising Form](#). Then send the signed version to me by email.

- This is done each term and is a crucial step to clearing holds and getting departmental permissions for desired courses.

4) Note that Fall 2025 registration for graduate students opens on Monday, April 7: [Registration Dates | Calendars | General Information | Office of the Registrar](#)

Social Media

Want to stay up to date with all things UGA Geography? Follow us on our social media accounts. If you have any events, news, awards, or other information you'd like to share on our social media, please reach out to Matt Colonius.



<https://www.facebook.com/GeographyDepartmentUGA/>



<https://www.instagram.com/geographyuga/>



<https://twitter.com/UGAGeography>

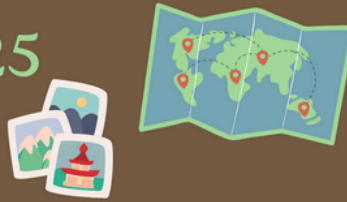


<https://geography.uga.edu>

OPPORTUNITIES AND ANNOUNCEMENTS

- [GUSTO'S Spring 2025 Calendar](#)

GUSTO Spring 2025 Overview



January

1/21: Coffee Hour
1/28: Engagement Fair



February

Week of 2/10: Coffee Hour
Week of 2/24: Trivia Night with Prizes!



March

Week of 3/10: Coffee Hour
Week of 3/24:

Local Hike/
Geocache



April

Week of 4/7: Fall '25 Courses Showcase
Week of 4/21: Coffee Hour

May

Week of 5/5: Greenroof Potluck



Social Media

Want to stay up to date with all things UGA Geography? Follow us on our social media accounts. If you have any events, news, awards, or other information you'd like to share on our social media, please reach out to Matt Calonius.



<https://www.facebook.com/GeographyDepartmentUGA/>



<https://www.instagram.com/geographyuga/>



https://twitter.com/UGA_Geography

GET YOUR FLU SHOT ON CAMPUS!

#FLUGA

NO OUT-OF-POCKET COST FOR STUDENTS!

#BeWellUGA

SCAN TO FIND DATES & LOCATIONS



University Health Center
College of Pharmacy
Well-Being Resources

Bring your UGA ID
& Insurance Card!



<https://geography.uga.edu>

OPPORTUNITIES & ANNOUNCEMENTS

- [TUTOR, UNIVERSITY OF GEORGIA ATHLETIC ASSOCIATION](#)
[ACADEMIC SUPPORT SERVICES](#)

DESCRIPTION

Provide individual and small group tutoring to student-athletes in the Rankin Smith Student-Athlete Academic Center. Assist students in improving academic achievement by meeting with them weekly to clarify concepts, enhance study skills, and review class materials.

COURSES NEEDED

GEOG 1111

additional courses in other subjects needed as well

COMPENSATION/HOURS

*Undergraduate students - \$13/hour

*Graduate students/professionals - \$15/hour

Please note that individuals with an assistantship or any other on-campus employment cannot exceed 20 hours per week across all jobs

POSITION TYPE

*Part-time, not eligible for benefits

*Tutoring will be conducted in-person

*Hours of Operation:

Sunday – 5-9:30pm

Monday-Thursday – 8am-9:30pm

Friday – 8am-4:30pm

*evening availability is not required, but always needed

QUALIFICATIONS

*Must be in at least second year of undergraduate study or a graduate student/professional

*Must have earned a B or above in course(s) you are tutoring

*Must have a minimum GPA of 3.0

DESIRED CLASS LEVEL(S)

*3rd Year, 4th Year, Graduate Student, Alumnus

EXPERIENTIAL LEARNING CREDIT

*Undergraduate student tutors may be eligible to receive Experiential Learning Credit

APPLICATION PROCEDURES/ADDITIONAL INFORMATION

*If you are interested, please reach out to rankintutoring@uga.edu.

General News and Announcements



The Graticule Weekly is distributed each Friday Afternoon. If you have any news or events you'd like to share throughout the semester, please share them the Geography Department's Communication Coordinator well in advance. Past editions of The Graticule Weekly are available to view on our website!



With the Fall semester in full swing, our community remains busy as faculty, staff, students, and visitors navigate our campus. Prioritize your transportation safety and the safety of other's by checking out [the Watch For Dawgs official website.](#)



Please download the new UGA Safe app from the Google Play or Apple App stores. Login using your UGA MyID or register as a guest to take advantage of a variety of safety features. For more information, please visit the [UGA Office of Emergency Preparedness website.](#)

Follow us on social media!





Center for Counseling
& Personal Evaluation
Mary Frances Early College of Education
UNIVERSITY OF GEORGIA



**Thursdays
starting
February 13th
6:00-7:30pm**



**SCAN THE QR CODE TO
COMPLETE AN INTEREST FORM
OR CALL 706-542-8508**



Latinx Student Support Group





The Fontaine Center

University Health Center

Student Affairs

UNIVERSITY OF GEORGIA

GRADUATE STUDENT GROUP WELLNESS COACHING

Looking to connect with students working on dissertations, theses, academic projects, or research papers? Register for Graduate Student Group Wellness Coaching to stay motivated and improve strategies for time management and work/life balance.

Join us for 30-minute sessions to discuss academic goals and writing strategies or stay for an open 1.5 hour writing lab to work on your projects! Snacks provided!

FRIDAYS STARTING 1-24
WILLIS WRITING CENTER
PARK HALL 66
11AM-1PM

**Snacks will be provided!*





GET HELP

Whether it's a life-threatening emergency, a non-emergency concern, or a crime tip; there are several options to relay those concerns.

MOBILE BLUELIGHT

Immediately call the UGA Police and share your location in real-time with them.

FRIEND WALK

Send your location in real-time to a friend so they can watch you as you walk to your destination.

CHAT WITH UGA POLICE

Report a concern by texting with UGA Police.

HOW TO RESPOND TO AN EMERGENCY

Conveniently located in one place to help you take immediate action.



DOWNLOAD THE APP!

t.uga.edu/7Xf

